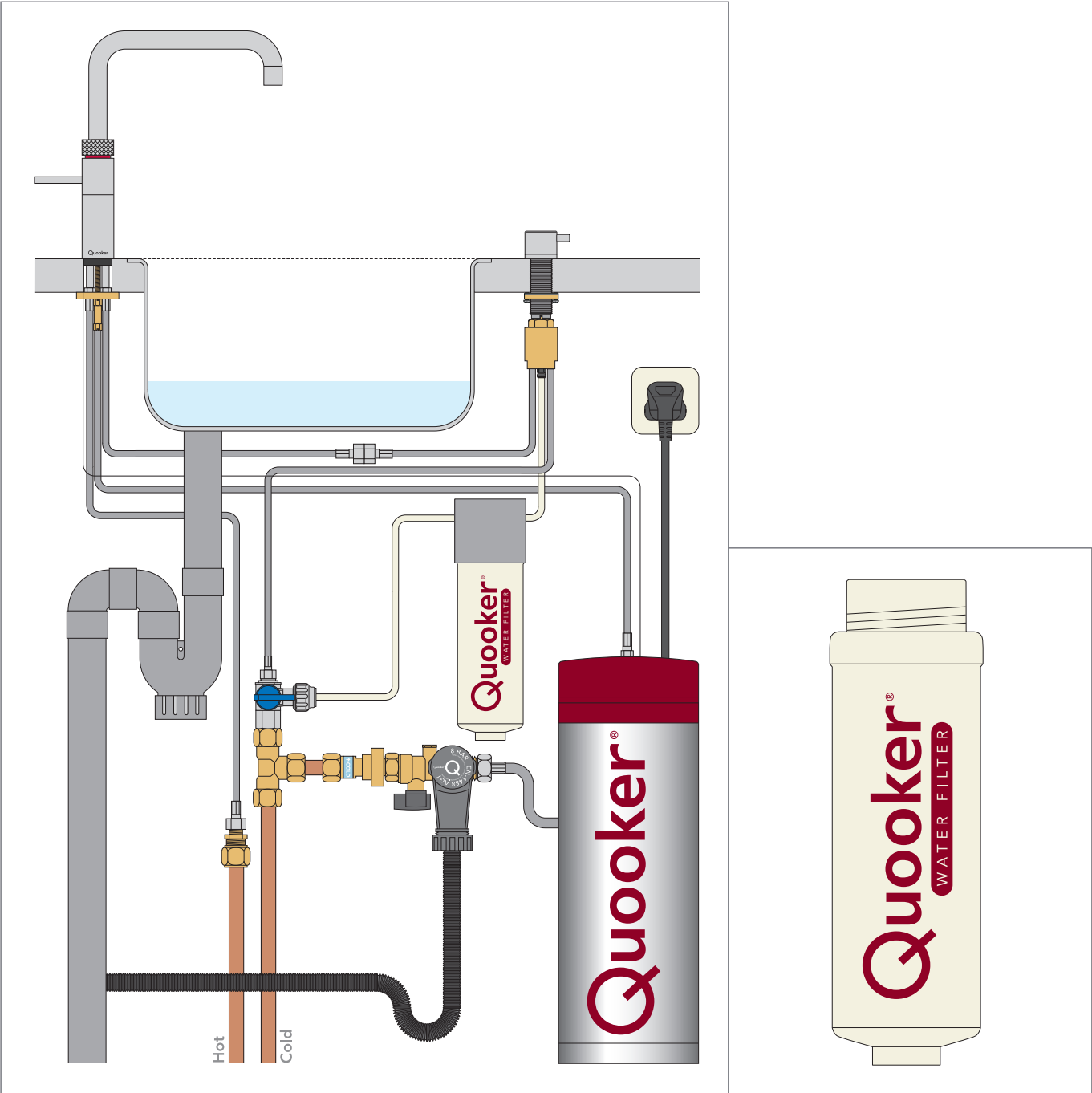
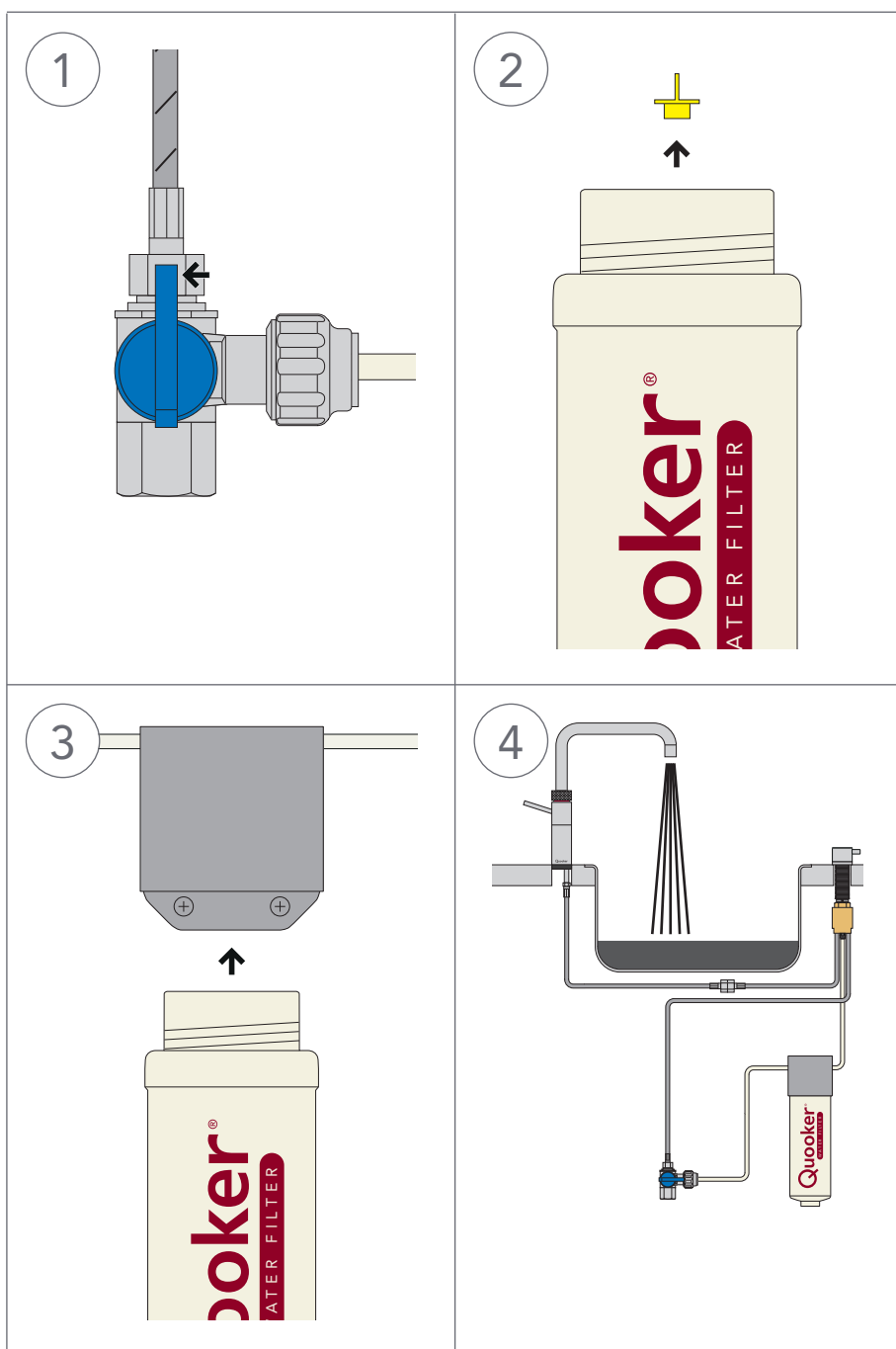


Replacing water filter cartridge



- 1 Switch off the T-valve by turning the blue handle in line with the main water flow.
- 2 Remove the yellow plug from the new water filter cartridge.
- 3 Remove the old water filter cartridge. Screw in the new cartridge until seated. Do not overtighten.
- 4 Return the T-valve to its original position. Turn the water switch handle to the filtered water position. Turn on the mixer tap and run the water until it is clear. Black water will flow out initially. These are carbon particles from the filter and are completely harmless.



PLEASE NOTE

For hygienic reasons it is advised to replace the water filter cartridge every six months.